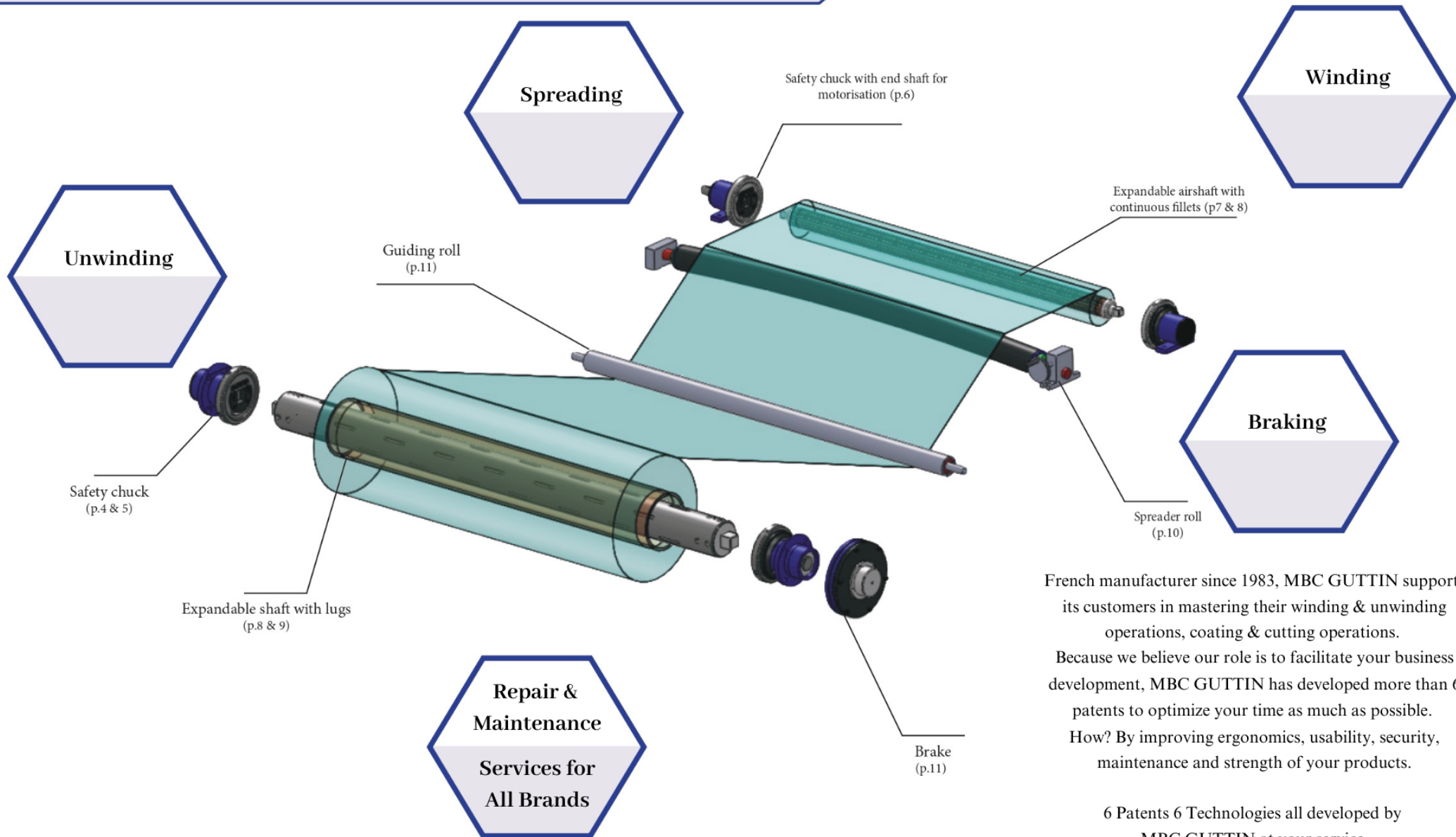


Winding - Unwinding Equipment

French Manufacturer of expandable airshafts - Safety chucks - Brakes - Spreader rolls



MECHANISM
BLOCKING
CONTROL



French manufacturer since 1983, MBC GUTTIN supports its customers in mastering their winding & unwinding operations, coating & cutting operations. Because we believe our role is to facilitate your business development, MBC GUTTIN has developed more than 6 patents to optimize your time as much as possible. How? By improving ergonomics, usability, security, maintenance and strength of your products.

6 Patents 6 Technologies all developed by MBC GUTTIN at your service.

Benefits



Made in France

100 % steel

To be mounted instead of any installation :
replacement – custom made - repair

Possibility of certain adaptations according
to your requests

Safety

Auto- Lock system

Guarantee greater security

A chuck with several options for your
safety & various types of locking system
(p6)



The MBC safety chucks (Mechanism Blocking Control) are designed to achieve all your winding & unwinding operations. Its automatic locking system ensure protection in the event of an accident.

Discover all our designs and find the solution that best suits your needs.

MBC's Patents



Easier maintenance

A chuck designed to optimize your maintenance time.

Save nearly 15 minutes on the change of your wear parts.

Only 7 screws and disassembly from the front face !



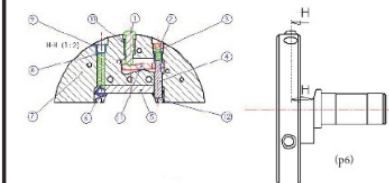
Easier maintenance

Disassembly of steering wheel axis and the locking ball becomes as easy as child's play.



Design

The design of the locking system features a push button that is stronger, more secure, more ergonomic



MODEL	REEL WEIGHT	TORQUE	SQUARE DIMENSION
14 – 20	150 kg	40 Nm	14 to 20 mm
18 – 25	400 kg	120 Nm	18 25 mm
20 – 30	800 kg	185 Nm	20 to 30 mm
30 – 40	1600 kg	350 Nm	30 to 40 mm
40 – 50	2850 kg	1 100 Nm	40 to 50 mm
50 – 80	7200 kg	2 350 Nm	50 to 80 mm
80 – 120	11 500 kg	9 000 Nm	80 to 120 mm
120 – 180	22 000 kg	20 000 Nm	120 to 180 mm
180 – 230	60 000 kg	40 000 Nm	180 to 230 mm

Available goods

Manual chuck

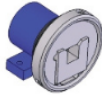

- Chuck with pivoting disc
- Chuck with sliding disc
- Translatory chuck, stroke of 50 or 100 mm

Pneumatic chuck

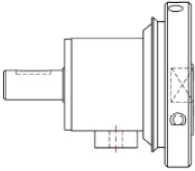
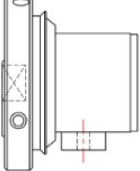
- Pneumatic chuck simple or with double effects
- Pneumatic selfcentring and multifunctional

Range of options :


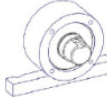
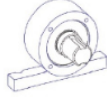
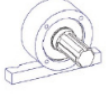
Choose your fixation type :

Foot (serie 150)   Flange (serie 250)

Choose your shaft end (coupled to a motorisation or a braking system) :




Chuck with shaft end = SFE/G   Chuck without shaft end = SFE

If with shaft end, choose the type best suited for your application :






STD  MD  BD  AC  Other applications on demand

Choose your geometry :




WITHOUT wear part

Type A  Type E  Type B 

WITH wear parts

Type APU  Type EPU  Type BPU  Type AVPU  Type AWPU 

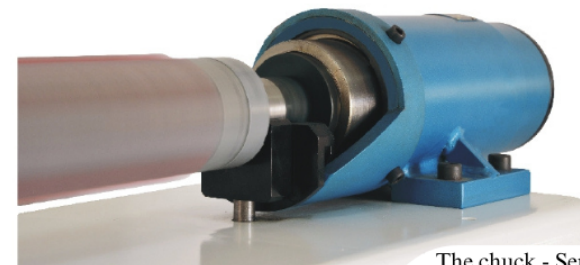
Choose your anti opening system :

Type 1 - Left knurl  Type 1 - Right knurl  Type 2 - Push button 

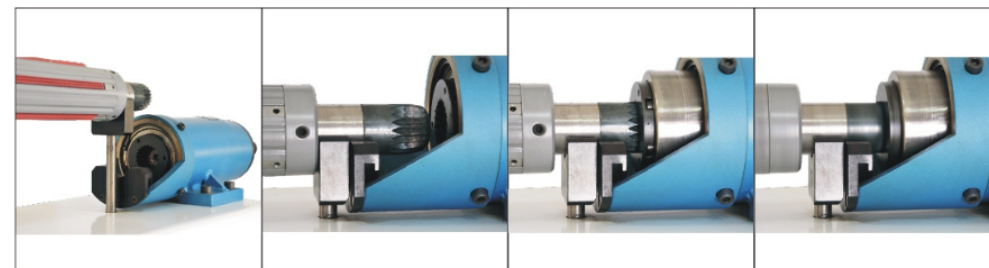
MBC's Patent : Chuck serie 2000

Benefits

- Work at high speed
- No vibration
- Selfcentring
- Multifunctional
- Axial adjustment



The chuck - Serie 2000 & 2100 is a pneumatic chuck that simplify your operations and improve your performance.



- | | | | |
|-------------------------------------|-----------------------------|--|---|
| Step 1 | Step 2 | Step 3 | Step 4 |
| Install your shaft onto the support | Start your pneumatic system | Thanks to its conical tip, the Serie 2000 collects and centers automatically the shaft.
The double conical tip avoids damaging effects on the notched end | Start the rotation.
You now have a smooth rotation with no vibration, allowing work at very high speed, in safer conditions, with better performances. |

Options available:

Smooth shaft support



Expansible head with shells



Shaft support with journal bearing



Expansible head with lugs



Benefits



Made in France
since 1983

Engineering Department
Custom made – Repairs

Lightness : MBC Guttin
thinks about your users !



R&D of reinforced aluminium :
+ 35 % load
- 40% bending
for the same weight as a standard
aluminium shaft



Expandable airshafts allows the inner core
to mold the shaft and to exert winding &
unwinding operations.

As a manufacturer, MBC offers expandable
airshafts ranging from ø1" (25.4 mm) up to
ø35" (900 mm) and up to 9 m length.

We carry out the desire shaft end with all
your specifications needed for your
application.

Choose your material :
Aluminium - Steel,
and only for shaft with lugs :
Carbon - reinforced Aluminium

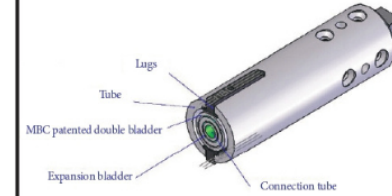
Choose your expansion :
Rubber - Aluminium - Steel

Choose your expansion :
With lugs or continuous fillets

Choose your shaft end :
Square - triangle - double
geometry or custom made.

MBC's Patents

Airshaft with lugs



Strengthness

Protection of the bladder kit
with the «double skin».
Unique & patented by MBC
Guttin.



Easier maintenance

Thanks to our double skin
bladder, the lugs remain in place !

You save 45 minutes when
changing the bladder kit.

Design

Airshaft with continuous fillets



Expandable head

- Cantilevered work
- Rigidity & adaptability
- Stationary bar

Sleeve

- Quick use
- Change of ø if desired
- Easily switch from ø74 mm to ø150 mm

Airshaft with shells

- Protects the final product
- Thin core thickness
- Can be used without any cores

Design for paper industry

- Locking & centring continuous fillets
- Static balancing of the tube
- 1750 m/ min - up to 15 tons

Friction bar

- Multitracks
- Friction rings (balls or pawls)
- Equal tension on each spool

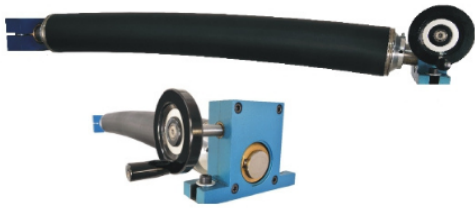
SPREADER ROLLS

Get the best spreading system for your material.

A good spreading is achieved by selecting the right material suited to your product as well as the type of fold.

MBC offers 4 kinds of spreader rolls, each tailored to specific application.

Curved spreader roll or Banana roll



Spreader roll with stainless steel laths



Benefits

- Operates by deformation
- The most versatile of our spreader rolls (moisture, corrosive..)
- Various coatings or fully made of stainless steel
- Fixed or variable curvature

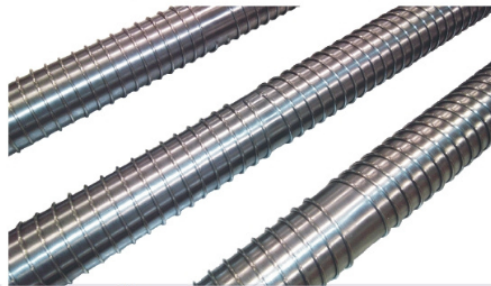
Benefits

- Operates by spreading
- Suitable for heavy and delicate materials
- Various coatings for the laths

Spreader rolls with ropes



Spiral spreader rolls (machinated or add-on)



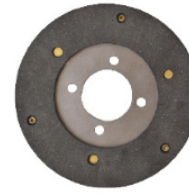
Benefits

- Operates by spreading
- Perfect for technical textiles & delicate materials
- Polyvalent (film, plastic..)
- Different kind of ropes

Benefits

- Operates by spreading the material effortlessly
- To be mounted in place of guiding rolls
- Thickness & depth options
- Available in aluminium, steel, stainless steel, rubber
- No maintenance required

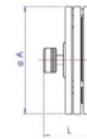
BRAKES



Manage the tension of your product thanks to our MBC braking system.
At MBC we offer a ferrodo brake, manual or pneumatic, made in France, to suit all your applications.

Looking for even more accuracy?
We also offer multi-piston and electric brakes.
Do not hesitate to contact us!

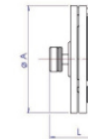
Mono-disc



Power	øA	L
40 Nm	145	100
70 Nm	220	100
480 Nm	300	100



Bi-disc

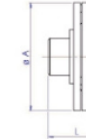


Power	øA	L
90 Nm	145	125
180 Nm	220	125
900 Nm	300	125

MANUAL
BRAKE



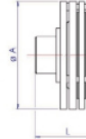
Mono-disc



Power	øA	L
40 Nm	145	125
70 Nm	220	125
480 Nm	300	125



Bi-disc



Power	øA	L
90 Nm	145	145
180 Nm	220	145
900 Nm	300	145

PNEUMATICAL
BRAKE



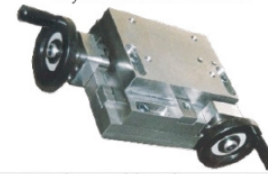
Miscellaneous

- Anti-static Material
- Tension Control

Guiding roll



Support base axial and or radial
adjustment for chuck



Mechanical head expansion
with torque



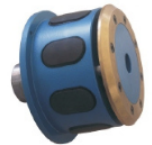
Trolley and/or frame design



Mechano pneumatic or manual
reel riser



Mechanical head with axial thrust



Shaft with bearing case for cantilevered
unloading



Fiberglass Core



Aluminium locking cones










GLOBAL PRESENCE



50 Route du Charmay - 38490 CHARANCIEU
Tél : + 33 (0) 4 76 32 07 82 -Fax : + 33 (0) 4 76 32 29 56
www.guttin.com - mbc@guttin.com

Management Fabrice & Stéphane GUTTIN	Sales Patrick CREUSET + 33 (0) 6 61 30 07 83	Administrative & Accounting Stéphane GUTTIN Marie -Blanche GUTTIN	Technical Manager Fabrice GUTTIN
Insides Sales France Isabelle LECUYER	Export Paloma OLAY		Engineering - Custom Service Julien GULLON
Company Founder & Consultant Christian GUTTIN			Quality & Production Manager Gérard REYNAUD

— Our Worldwide Sales —

 SWITZERLAND CORTECH AG Mr Sandro CORTESI (tel) +41 62 752 20 84 info@cortechag.ch	 NETHERLANDS OPENSUPPLY B.V. Mr Erik FRANKE (tel) +31 541 700 260 erik@opensupply.eu	 USA LOUIS P. BATSON Incorporated Mr Chuck WITHINGTON (tel) +1 864 242 5262 chuckw@lpmatson.com	 POLAND ANT MASCHINENHANDEL UG Mr Alex NITUSOV BERLIN (tel) +49 30 985 984 26 +49 173 272 69 00 info@ant-germany.com	 CZECH REPUBLIC ANT MASCHINENHANDEL UG Mr Alex NITUSOV BERLIN (tel) +49 30 985 984 26 +49 173 272 69 00 info@ant-germany.com
 NORTH GERMANY ANT MASCHINENHANDEL UG Mr Alex NITUSOV BERLIN (tel) +49 30 985 984 26 +49 173 272 69 00 info@ant-germany.com	 SOUTH GERMANY Mr Juan Jose SANCHEZ KARLSRUHE (tel) +49 176 87 55 74 38 jsanchez@guttin.com	 SPAIN BARBANY Maquinaria Textil Mr Rodolf BARBANY (tel) + 34 93 450 16 87 info@barbany.com	 MOROCCO AEROTFZ /Technologie Service Offshore / Onshore Mr Guy FOREST (tel) + 212 539 400 632 (cial) +212 665 731 116 contact@aerotfz.com	 AUSTRIA HENNLICH Gmbh & Co KG Mme Laura DOBLHOFER (tel) +43 7712 3163 645 (tel) +43 664 8472 171 Laura.Doblhofer@hennlich.at